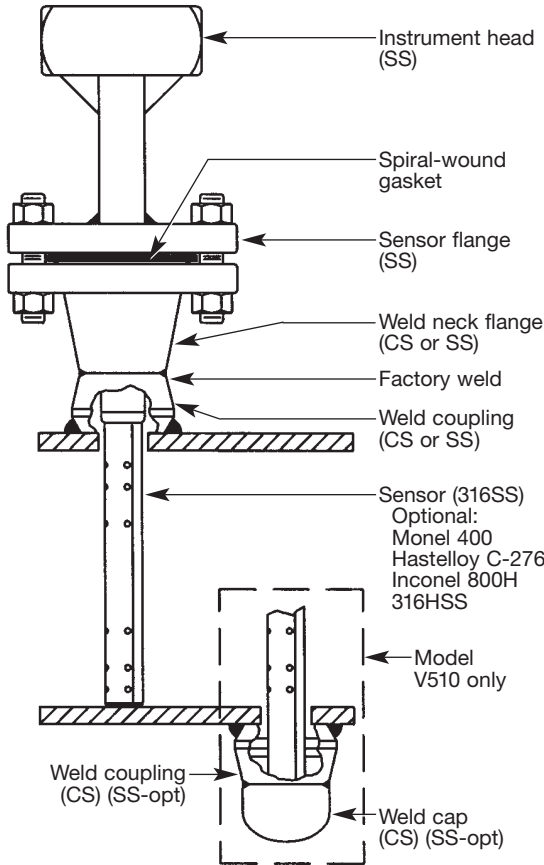


Differential Pressure Flow Sensors

**V500 Single Support**  
**V510 Double Support**  
 Flanged Components

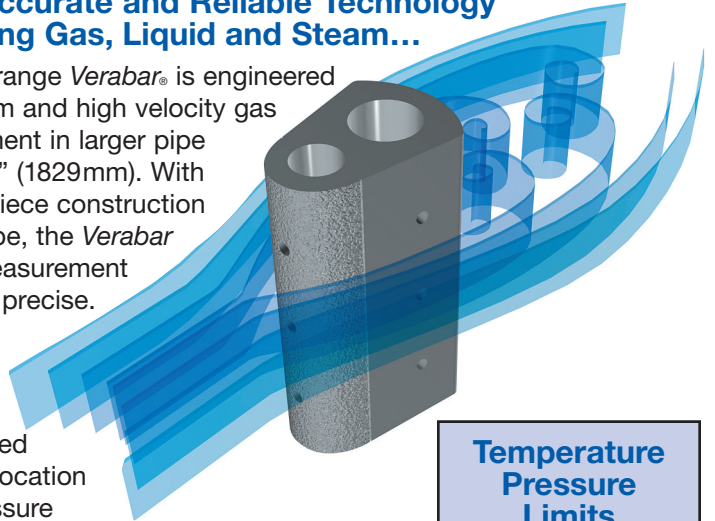
**V500 (Single Support)**  
**V510 (Double Support)**



**The Most Accurate and Reliable Technology for Measuring Gas, Liquid and Steam...**

The extended range Verabar® is engineered for liquid, steam and high velocity gas flow measurement in larger pipe sizes, up to 72" (1829mm). With its solid, one-piece construction and bullet shape, the Verabar makes flow measurement leak proof and precise.

The unique sensor shape reduces drag and flow induced vibration. The location of the low-pressure ports eliminates the potential for clogging and improves signal stability.



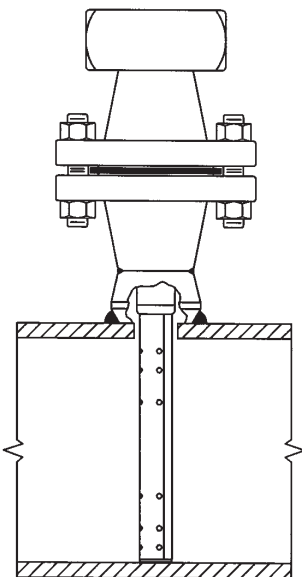
**Temperature Pressure Limits (ANSI Class)\***

<b>150#</b>
275 psig @ 100°F (19 Bars @ 38°C)
80 psig @ 800°F (5.5 Bars @ 426°C)
<b>300#</b>
720 psig @ 100°F (49.6 Bars @ 38°C)
410 psig @ 800°F (28.3 Bars @ 426°C)
<b>600#</b>
1440 psig @ 100°F (99.3 Bars @ 38°C)
825 psig @ 800°F (56.9 Bars @ 426°C)
<b>1500#</b>
3600 psig @ 100°F (248.2 Bars @ 38°C)
190 psig @ 1500°F (13.1 Bars @ 815°C)
<b>2500#</b>
6000 psig @ 100°F (419.6 Bars @ 38°C)
315 psig @ 1500°F (21.7 Bars @ 815°C)

Model Specs	V500 & V510
Pipe Connection	Flanged
Sensor Code	20
Sensor Diameter	2" (51mm)
Accuracy	±1% of flow rate; ±0.5% if calibrated
ANSI Class*	150#, 300#, 600#, 1500#, 2500#
Pipe Size	12" - 72" (300mm - 1829mm)
Instrument Connection	1/2" NPT
Components Furnished	Weld coupling, weldneck flange, gaskets, studs & nuts V510 includes additional weld coupling and pipe cap.
Flange Size	3"

**High Pressure and Temperature**

Applications up to ANSI Class 2500#



**Unique Design Features**

High Pressure Threaded (HPT) and High Pressure Socket (HPS) designs offer the highest possible pressure and temperature capabilities. When pressure containment and safety are primary concerns, the HPT/HPS has the strongest and safest design in the industry.

As with all Veris designs, it meets ANSI/ASME B31.1 and can be supplied with code welding (ASME Section IX), hydrostatic testing, N.A.C.E. and material traceability.

\* DIS and JIS flanges available. Consult factory.

**Applications**

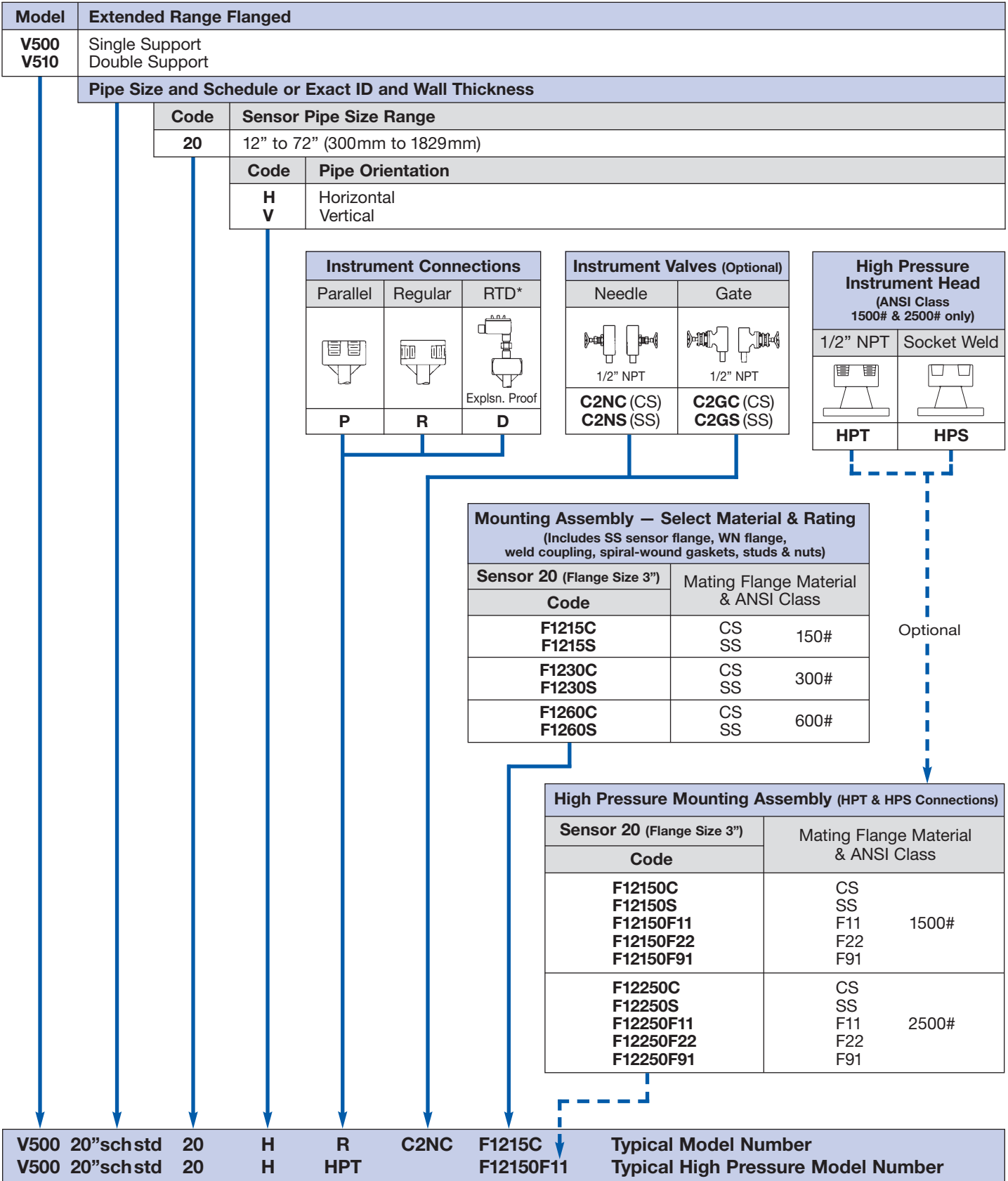
**Main Header Steam Lines**  
 Used for high pressure and temperature applications such as main header steam lines.

For these applications, pipe mounting assemblies are available in chrome-moly material (ASTM A182 F11, F22 & F91).

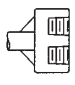
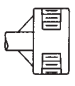
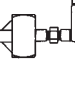
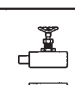
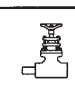

**Other Applications**

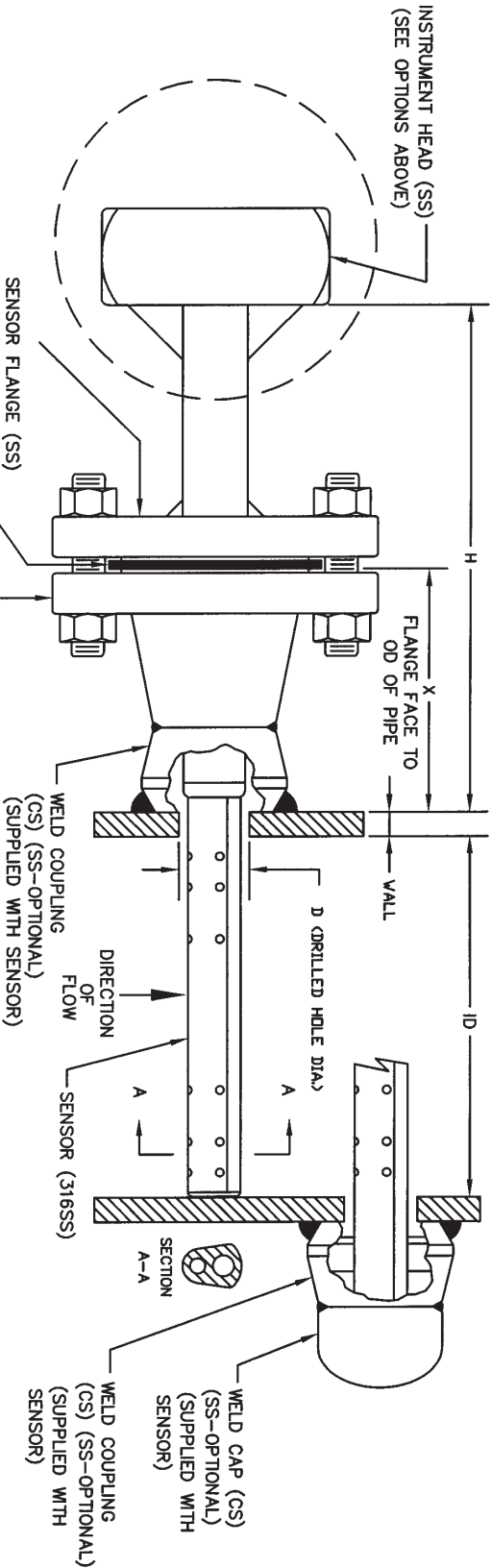
- High pressure and temperature gasses and liquids
- Natural gas transmission lines
- Boiler feed water lines
- Oil well injection lines

# Ordering Information



\* For high pressure (>500psig) or high temperature (>500°F), remote mount RTD in a thermowell is preferred.

CODE	RMOUNT	PARALLEL	REGULAR	RTD	VALVES	NEEDLE	GATE
							
1/2" NPT	P						
1/2" NPT	R						
X PROOF	D						
1/2" NPT							
C2NG (CS) C2NS (SS)							
1/2" NPT							
C2GC (CS) C2GS (SS)							



NOTES:  
1. CONTACT VERIS FOR DIMENSIONAL DRAWING FOR HIGH PRESSURE THREADED (HPT) & HIGH PRESSURE SOCKET (HPS)

CUSTOMER: \_\_\_\_\_  
 PROJECT: \_\_\_\_\_  
 ORDER NO: \_\_\_\_\_  
 TAG NO: \_\_\_\_\_  
 PIPE SIZE & SCHEDULE: \_\_\_\_\_  
 CATALOG NO: \_\_\_\_\_  
 SERIAL NO: \_\_\_\_\_  
 CERTIFIED BY: \_\_\_\_\_ DATE: \_\_\_\_\_

ITEM	SENSOR
SENSOR DIA.	2" (51mm)
FLANGE & COUPLING SIZE	3"
DIM "D" DRILLED HOLE DIA.	2-1/8" (54mm)
DIM "H" ANSI CLASS 150#	9.9" (252mm)
DIM "H" ANSI CLASS 300#	10.8" (275mm)
DIM "H" ANSI CLASS 600#	11.3" (287mm)
DIM "X" ANSI CLASS 150#	4.63" (118mm)
DIM "X" ANSI CLASS 300#	5.00" (127mm)
DIM "X" ANSI CLASS 600#	5.38" (137mm)

\*"H" & "X" DIMENSIONS ARE APPROXIMATE (FOR SIZING PURPOSES ONLY)

VERABAR MODEL: V500/V510  
 FLANGED CONNECTION

DATE 7/10/03	DWG NO. SUB-5105
SCALE NTS	REV A PAGE 1 OF 1

